



Vignettes 103

October 6th, 2021

Contents

| | |
|---|---|
| Club News | 1 |
| Permajet Talk PowerPoint Presentation | 1 |
| Amateur Photographer Magazine | 2 |
| PAGB News | 3 |
| Internal Competitions..... | 3 |
| BBC Pictures | 4 |
| Cheltenham Literary Festival | 4 |
| The Nature Conservatory Photo Awards 2021 | 5 |
| Quote of the Week..... | 5 |
| Appendix 1: Club Face to Face (F2F) Meetings - Covid Measures | 6 |
| Appendix 2: Permajet Presentation | 7 |

Club News

Next week's talk - 11th Oct - Zoom not F2F

We were due to host, F2F, Ashley Franklin for our 11th Oct club night which he was going to follow with a talk to Tetbury Camera Club on the following night, Tuesday. He was coming from Derbyshire but because of family problems, this now won't be possible. However, the good news is that he can still do the talk on the 11th of Oct as a Zoom presentation.

So, 11th Oct club night is a Zoom night NOT F2F

Here's the dial in details:

Cirencester CC is inviting you to a scheduled Zoom meeting.

Topic: Cirencester CC: Ashley Franklin - Under a Tuscan Sky

Time: Oct 11, 2021 07:00 PM London

Join Zoom Meeting

<https://us02web.zoom.us/j/6966667182?pwd=OWVaNWVTNlpuRlhENTJ0eWFDeWY3QT09>

Meeting ID: 696 666 7182

Passcode: CCC21

Permajet Talk PowerPoint Presentation

Colin Hulley of Permajet has been back in touch as promised with a copy of the PowerPoint talk he gave to us a couple of weeks ago. It's appended at the end of this edition of "V". Any questions, let us know and we can get back to Colin



Well, as previously announced in "V" just to confirm that we are in this week's Amateur Photographer Magazine thanks to Sue's great work in putting it all together. As a full page(s) spread it looks even better than the draft copy we were originally sent. Here's a couple of pics.



PAGB News

Here's the latest, October, PAGB newsletter from Paul:

<http://www.pagbnews.co.uk/sites/default/files/newsletters/en292%201%20Oct.pdf>

Internal Competitions

This Season's Club Competitions

| Subject | Competition | Submission Date |
|--------------------------|--------------------------------------|-----------------------------------|
| Water (in all its forms) | A | September 27 th , 2021 |
| Architecture | B | 8 th November, 2021 |
| Sunrise, sunset | C | 6 th December 2021 |
| Coastal | D | 17 th January, 2022 |
| Winter | E | 28 th February, 2020 |
| Farming in the Cotswolds | Pitchers Trophy (annual Competition) | 11 th April, 2022 |
| Various | Annual Competitions | 11 th April, 2022 |

The Dropbox link is now up and running and is featured on every Comp submission page, along with as a News item - here is the link.

<https://www.dropbox.com/request/DpAdq7inLJSz17gWu2Bg>

BBC Pictures

Another selection from the BBC's news website.

<https://www.bbc.co.uk/news/in-pictures-58720336>

<https://www.bbc.co.uk/news/uk-england-58701294>

<https://www.bbc.co.uk/news/world-africa-58747044>

<https://www.bbc.co.uk/news/uk-scotland-58722127>

<https://www.bbc.co.uk/news/uk-england-58619633>

<https://www.bbc.co.uk/news/in-pictures-58761284>

<https://www.bbc.co.uk/news/uk-england-manchester-58733322>

<https://www.bbc.co.uk/news/uk-scotland-58699837>

<https://www.bbc.co.uk/news/uk-scotland-58733514>

Cheltenham Literary Festival

Just a reminder that the Cheltenham Literary Festival fires up again as a physical event on the 8th - 17th Oct. There's a couple of photographic events you might be interested in which I dropped into "V95":

Saturday 9th Oct, 4.25-5.15, The Garden Theatre - Photography Now: Through the contemporary lens. *In the last century, photography was always novel. Now, it feels like our world is over-saturated with images. In the 21st century, what can photography do that is new? Sharing striking imagery from some of the world's most exciting photographers working today, Elephant Editor and journalist Charlotte Jansen (Photography Now) and writer and photographer Caleb Azumah Nelson (Open Water) explore how these artists are finding new ways to tell stories – and new stories to tell – through their pioneering style, and with it redefining photography for the modern age.*

Tuesday 12th Oct. 6 - 7pm. The Garden - Theatre Martin Parr: From The Pope To A Flat White: Ireland 1979 – 2019. *Martin Parr's unmistakable eye for the quirks of ordinary life has made him an icon of pop culture and a distinctive voice in photography for decades. In his latest collection he turns his camera's gaze on Ireland, documenting many of the most significant moments in the*

country's recent history. From the traditional aspects of rural life to The Troubles, the Good Friday Agreement and images of a thriving contemporary Dublin, the much-loved photographer shares his portrait of a country that has changed dramatically over the course of 40 years

The Nature Conservatory Photo Awards 2021

My goodness there's some wonderful images by the winners (and losers) of this recently announced competition results. There are 4 categories and submission every year is in August.

- People and Nature: Recreation, adventure, people enjoying the outdoors
- Landscape: A sense of place, with or without people
- Water: Above, below, or in between
- Wildlife: In the wild or in your backyard

Check out the Nature Conservancy website and winning images here:

<https://www.nature.org/en-us/get-involved/how-to-help/photo-contest/>

Finally, just a reminder to send your best three images of Jess to Jill B who's compiling the images to send on and use in our website. To date, she's only had images from a few members so it would be good to get a representative number from the club to help Jess with her portfolio.

Quote of the Week

I wish that all of nature's magnificence, the emotion of the land, the living energy of place could be photographed - Annie Leibovitz

That's it for this week. Catch up next week.

Cheers and stay safe

Martyn (thehoneys@btinternet.com)

Mike (mike.cheeseman@btinternet.com)

Appendix 1: Club Face to Face (F2F) Meetings - Covid Measures

The easing of Covid restrictions over the summer as part of the Covid roadmap has made physical club meetings a practical proposition and Watermoor Parish are now permitting hire of their hall facility again. To enable this and to satisfy their insurers there are a number of things that hirers have to provide to gain approval for hire. After some consideration, below is a summary of the club's approach to enable meetings to take place within the requirements. We will aim to put the relevant docs on the website if members want to have a look.

Clearly members will need to make their own judgements in light of their individual circumstances, but it is hoped that the pragmatic approach taken allows the club to recommence face to face club (F2F) nights as per the season's programme in an enjoyable manner. As always with these things this is subject to any changes in guidance. Please get in touch with me, or other committee members, if you have any issues arising. Many thanks. Stephen

Watermoor Church Hall Hire Covid Measures

Our activities must remain consistent with government guidelines at the time of the event. The requirements from the hall involve some element of cleaning by the club before and after the evening's programme.

Emphasis will be on precautions taken and as such the club:

(i) advises that anyone feeling unwell or having been notified for quarantine under Track and trace or NHS App or as a result of travelling requirements should not attend club meetings.

(ii) will ensure that seating, social distancing and ventilation are consistent with government guidelines.

(iii) request that members bring personal crockery/cutlery for any refreshments - some disposable items will be made available. We will not utilise hall crockery, just the kettle/boiler as appropriate.

(iv) suggest members consider continuing to use facemasks during meetings when appropriate.

Club Approach

1. The club will provide hand sanitiser for members use on entrance and exit from the hall.

- 1. The hall has QR posters displayed for members who wish to utilise the NHS app.*
- 2. In accordance with general "Health and Safety" good practice, a log will be kept of attendees on a F2F club night in case of the need for evacuation from premises which facilitates a roll call.*
- 3. Access to kitchen facilities will be restricted to reduce contacts and users will sanitise hands before and after use of kettle etc. It is noted that no cleaning of switches is to take place*

(for safety) therefore the emphasis is on sanitising hands before and after any such operations, ensuring hands are dry.

4. *Access to W/C's is restricted to one person at a time under the hall guidelines. Members should sanitise hands on entry and exit. At the end of evening contact points are wiped down as part of the exit process.*
5. *The club will use readily available Covid appropriate cleaning materials in the form of spray /paper towel and/or sanitising wipes to facilitate cleaning and provide bags to remove used material from the hall on completion.*
6. *Hard contact points e.g. door handles/locks, window handles/locks will be wiped on first contact when being operated and on final use when closed prior to exit.*
7. *The club anticipate utilising a restricted number of members on a given night to clean and handle equipment/chairs etc. thus reducing the number of potential contacts.*
8. *Those members should sanitise hands before commencing any handling, using spray/wipes to clean contact points when moving /setting up chairs etc. On completion of set up handling, members should sanitise hands again before commencing the actual event.*
9. *It is assumed that club materials in the locked storage may also be potentially contaminated and therefore contact points should be wiped before handling and on replacing in store.*

Although it all sounds a bit complicated, I hope that we will soon get into the swing of things in managing what we do to minimise impacts. Do get in contact if you have any queries. Stephen.

Appendix 2: Permajet Presentation



With PermaJet... It's always been about your image!



- ☀️ Company originally formed in 1983 as Nova Darkroom
- ☀️ PermaJet brand launched in 1999
- ☀️ A long history of helping achieve better printed images
- ☀️ From Darkroom through to Digital
- ☀️ UK & Agents in 27 countries worldwide





Why do my prints not match my monitor?



Images can often look great on a monitor but don't exactly print the same way, so you may try editing colours and reprinting to get what you see on screen...

All sounding familiar?



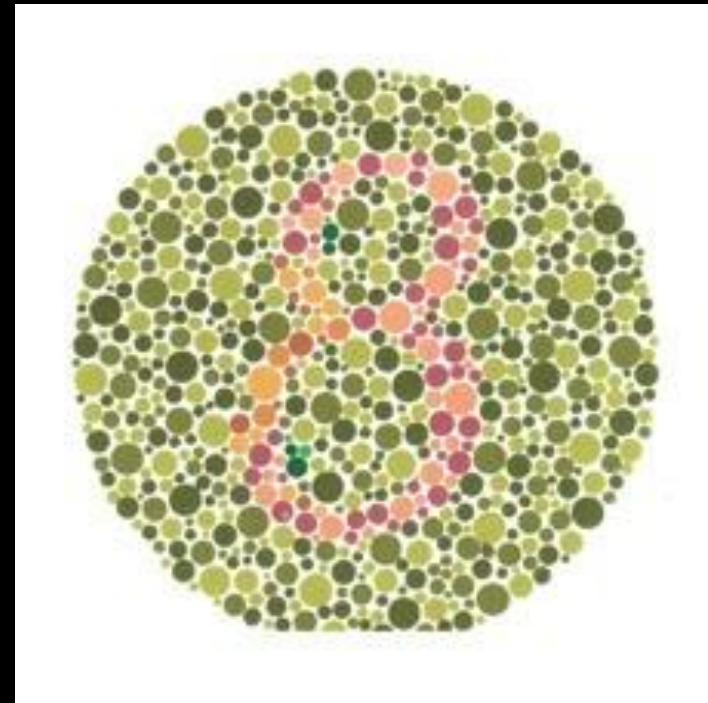
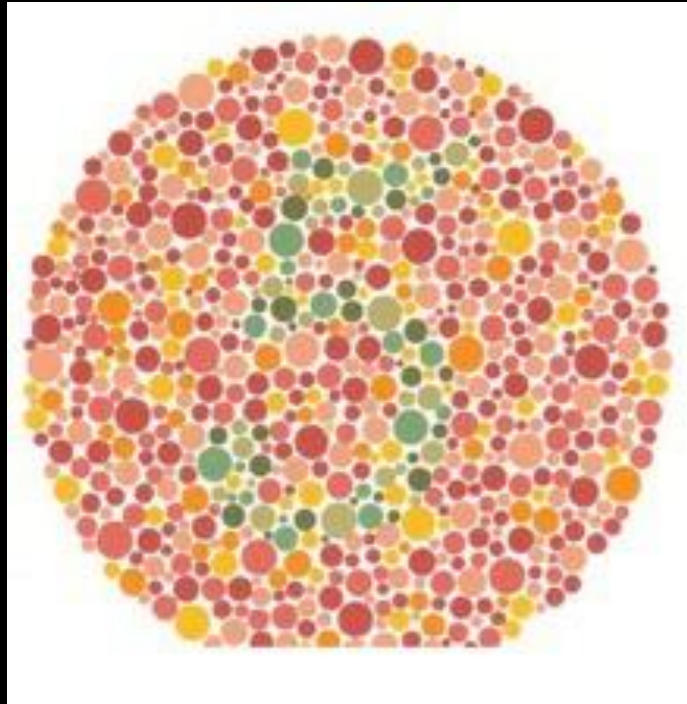
Do I really need to use colour management?

Have you convinced yourself that you can solve your colour problems by eye alone?

Can you really trust your eyes...?



What numbers can you see?





Does your monitor matter?

- ☀️ Yes, as it is the “preview” of your printed image
- ☀️ Modern monitors are LED Backlight
- ☀️ Different types of panel – Twisted Nematic, Vertical Alignment , In Plane Switching.
- ☀️ Mac products are typically - IPS
- ☀️ All monitors show colours in **RGB**
- ☀️ Monitor workspace is typically sRGB (Top of range = Adobe RGB)
- ☀️ ‘4k’ ,‘5k’ or ‘Retina’ refers to the DPI or resolution of the screen



Calibrate your monitor regularly

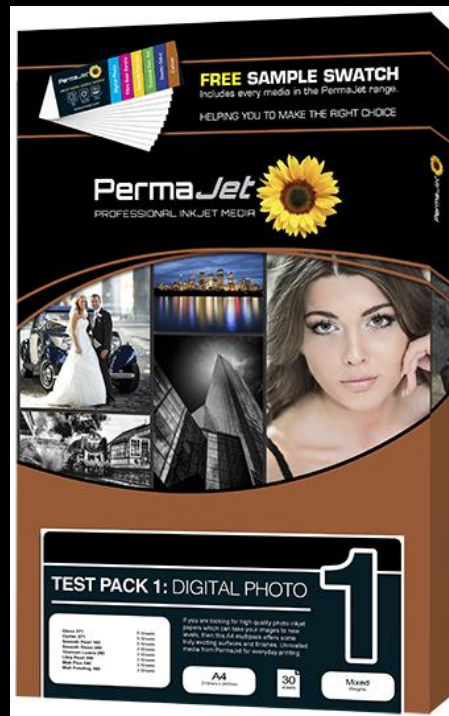
There are certain things to consider when calibrating your monitor...

- ☀ Allow 30 minutes warm up time
- ☀ Clean the screen
- ☀ Reduce brightness to approx. 100 – 120 Candela
- ☀ Consider the position of the monitor in the room
- ☀ Check changing light conditions as the ambient light can affect the image displayed on screen (low light is preferred)
(Too bright = less image contrast on screen)
- ☀ Will it go out of calibration – frequency of calibration?
- ☀ Use a DataColor Spyder or X-Rite device
- ☀ Prices start from £90 inc vat





**Now, let's look at the paper choices.
The PermaJet range has something for
everyone...**



23 Types of Inkjet Paper Media



4 Types of Inkjet Canvas Media



Grouped into three Test Packs for easy selection



Test Pack 1 = Digital Photo



Test Pack 2 = FB Baryta



Test Pack 3 = Smooth & Textured Fine Art

Digital Photo...

Digital Photo Family – Test Pack 1



Gloss 271gsm


A superior heavyweight 271gsm high gloss media with a true photographic feel and finish. An instant dry resin coated paper finished with a UV protected microporous supercoat.

DIGITAL PHOTOS
Gloss 271gsm

www.permajet.com
t: 01783 738000
e: sales@permajet.com

PermaJet

Sheets: 6"x4", 7"x5", 10x6", A4, A3, A3+, A2
Rolls: 13", 17", 24", 36", 44", 60"



Titanium Lustre 280gsm





This new photo paper truly resembles the look, feel and print quality of a metallic surface. Incredible detail and clarity is achievable delivering stunning high resolution visual impact.

DIGITAL PHOTOS
Titanium Lustre 280gsm

www.permajet.com
t: 01783 738000
e: sales@permajet.com

PermaJet

Sheets: 6"x4", 7"x5", A4, A3, A3+, A2
Rolls: 12", 24", 42"

-  Microporous, everyday print media.
-  The PermaJet Digital Photo range comprises of all the day-to-day popular papers such as Gloss, Satin/Oyster, Pearl, Matt and Metallic etc.
-  All these papers are created to match true professional photo weight and are guaranteed to deliver sharp and vibrant images time after time.
-  All these papers have a consistent high white base designed to avoid distraction from the image represented.

Fibre Based (Baryta)...

PermaJet
PROFESSIONAL INKJET MEDIA



FB Baryta Family – Test Pack 2



Traditional Fibre Base Baryta



Traditional darkroom qualities makes these the perfect digital alternative to the original materials.



Available as High Gloss, Satin, Matt & Silk making the range truly reminiscent of the acid-free fibre-based material used in darkroom printing.



In independent tests of over 200 fine art and photo papers, they have yielded the very highest D-MAX, colour gamut and skin tone accuracies, in turn creating truly excellent grey scale for BW images.



FB Gold Silk 315gsm

A true barium sulphate layer has been meticulously applied to the traditional fibre base, enabling users of FB Gold Silk 315 to create intense, rich blacks and creamy whites.

Sheets: A4, A3, A3+, A2
Rolls: 24", 44"

TRADITIONAL BARYTA

FB Gold Silk 315gsm

www.permajet.com
1 877 76 7600
e www.permajet.com



FB Royal Gloss 310gsm

An excellent 310gsm Fibre Base material with a natural white, acid-free base and subtle undulations. Multilayer technology delivers the highest colour gamut achievable with pigment inks.

Sheets: A4, A3, A3+, A2
Rolls: 17", 24", 44", 60"

TRADITIONAL BARYTA

FB Royal Gloss 310gsm

www.permajet.com
1 877 76 7600
e www.permajet.com



Smooth Fine Art...

PermaJet
PROFESSIONAL INK-JET MEDIA



Smooth Fine Art Family – Test Pack 3



Primarily a Cotton Rag media range.



Award-winning, classic media with the feel, texture and weight for quality 'Giclee' prints.



Here we have created a superb range of natural media that brings museum quality to your images.



They deliver unparalleled image definition throughout the range and you'll find the diverse material surfaces you have always wanted.



Textured Fine Art...

Textured Fine Art Family – Test Pack 3



Variable Textured Fine Art Surfaces




Award-winning, acid-free classic media with the feel, Texture and weight required for quality Giclee prints.



Four superb papers giving depth and texture to your Images where needed.



They deliver unparalleled image definition throughout the range and you'll find a diverse choice of surfaces to enable your image to jump off the page.



Gallery Etching 310gsm

A 310gsm, natural white base with an undulating surface, providing the rigidity, texture and feel of a fine archival material. The pronounced surface enhances image depth and detail.

TEXTURED FINE ART
Gallery Etching 310gsm

www.permajet.com
1 877 767 7655
www.permajet.com

PermaJet

Sheets: A4, A3, A3+, A2
Rolls: 17", 24", 44"



Museum Heritage 310gsm

A slightly textured, 310gsm off-white, sumptuous art paper. Totally acid free exhibiting a high gamut volume with low colour error. This is the perfect choice for all fine art print labs and galleries.

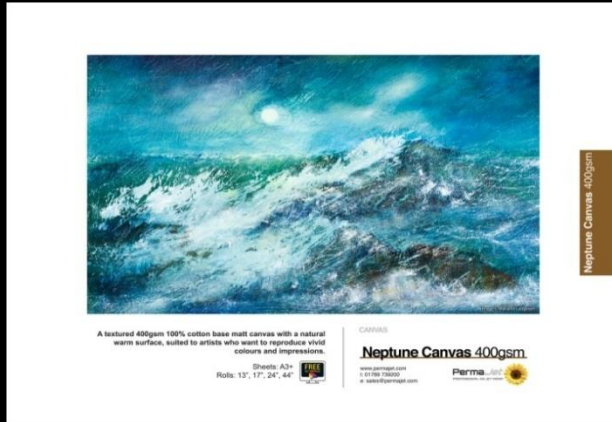
TEXTURED FINE ART
Museum Heritage 310gsm

www.permajet.com
1 877 767 7655
www.permajet.com





PermaJet

Sheets: A4, A3, A3+, A2
Rolls: 17", 24", 44"

Canvas Art Reproduction...



Canvas Inkjet Media – Test Pack 5

-  Heavy and realistic canvas materials
-  Real canvas base material with an inkjet coating applied that enables the realistic reproduction of Classic artworks which can be stretched over bars.
-  Suitable for artists and photographers wanting to re-create limited editions, one-off fine-art reproductions or exciting contemporary art.
-  Recommended for A3+ Inkjet Printers and larger.



Other Products – SnapShut Folio...



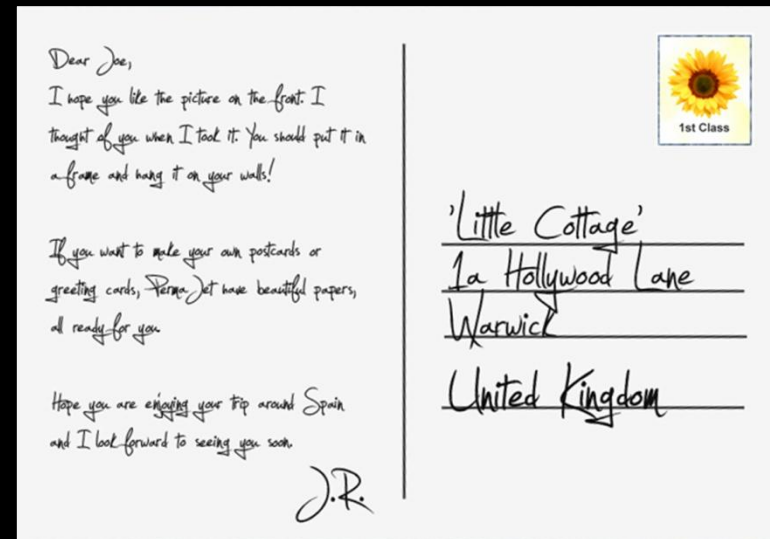
Store and display your prints or projects in a totally professional and easy-to-use book format. With your prints or pages held in place by the “SnapShut” hinge, this glue-free folio system offers amazing flexibility to create Photobooks in minutes.

Other Products - Postcards & Greetings Cards...

PermaJet
PROFESSIONAL INK-JET MEDIA



Create your own impressive,
professional designs



300gsm Photo Smooth Gloss or
270gsm Ultra Smooth Fine Art Matt
surfaces.

Smooth gloss front and back-printed with
address layout etc.

Other Products - Eco-Flo CIS Systems...

- ☀️ Eco-Flo reduces ink costs by up to 80%
- ☀️ Systems for Epson A3+ Photo Printers –
1500, R2000, R2400, R2880, R3000, 3800, 3880, SC-P600, SC-P800
- ☀️ 125ml of each ink colour
- ☀️ Guaranteed quality to match originals
- ☀️ Simple installation process
- ☀️ Free ICC Profiling
- ☀️ Reduce the average cost of an A4 print
from £1.00 to just..... **20p!**



Now calibrate your printer & papers...

PermaJet
PROFESSIONAL INKJET MEDIA



A Printer profile is made for the combination of your printer, the ink you are using and the paper of your choice. If you change any one of these factors, the profile will not be accurate!

Generic or Custom Printer Profiles?

Ensure you have a 'complete' nozzle check pattern

Check Print Head Alignment

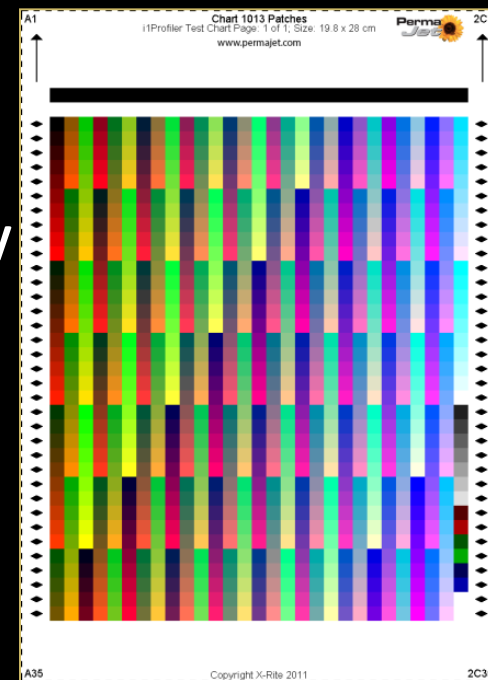
Print the Target Patch using the Adobe Color Print Utility

Always use a 'Large Letter' stamp

We use our profiling device/software and email an ICC profile back to you

Install the profile on your system

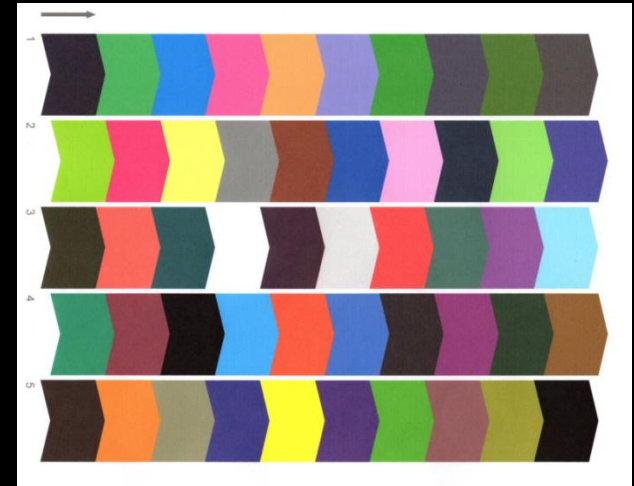
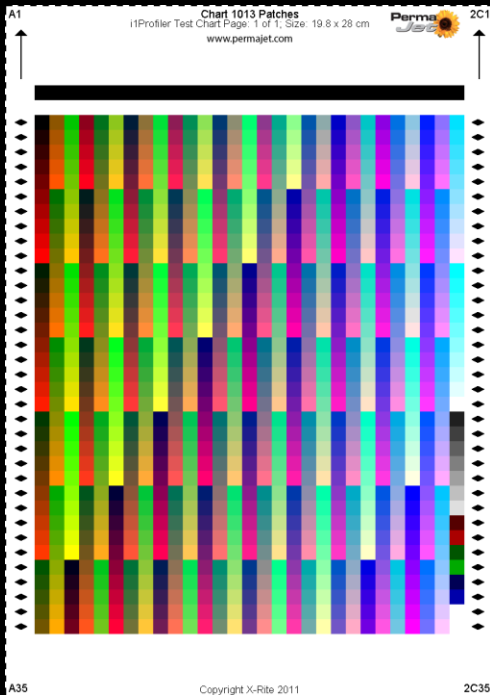
Select the profile when printing





Can I make my own print profiles? Yes, but...

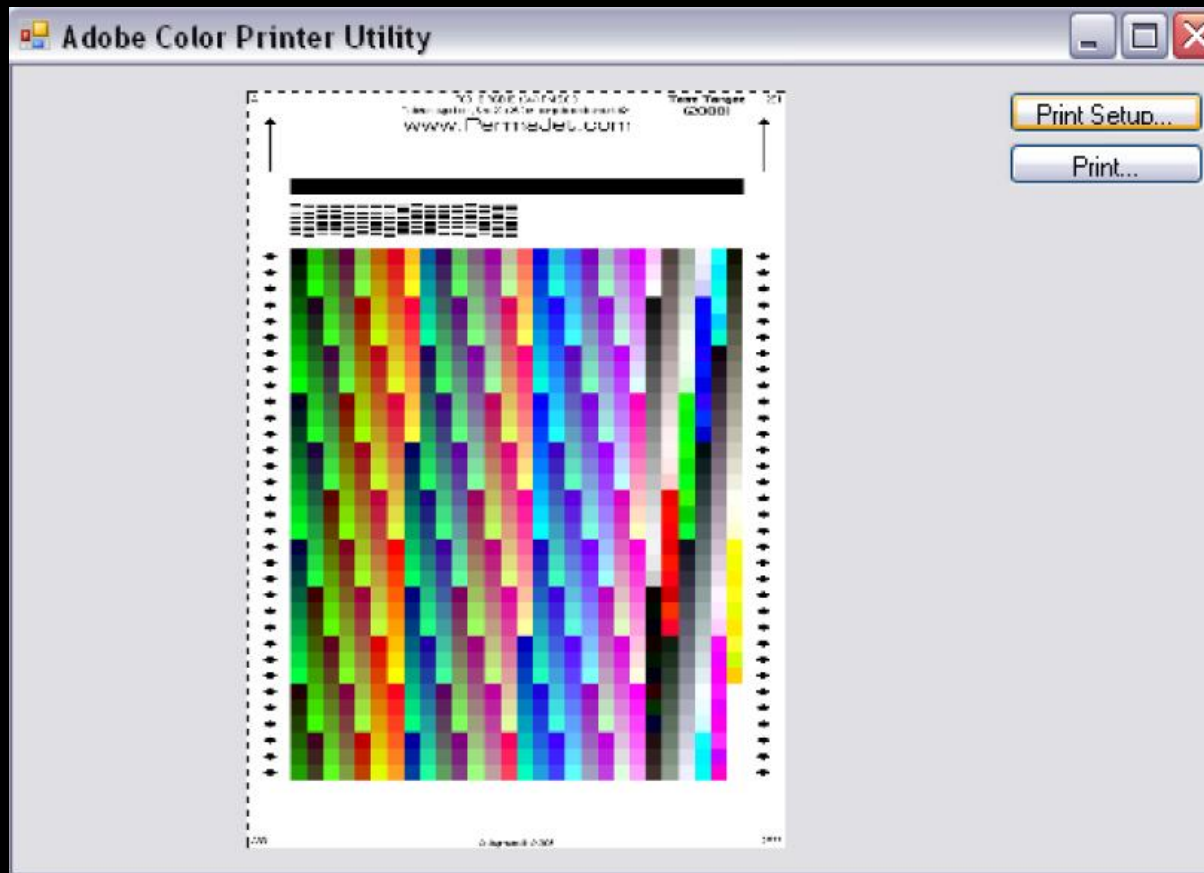
Color Munki Photo (£335)
measures only 50 patches



PermaJet custom ICC profiles have 1,013
colour patches using an X-rite iSis device.
And it's a **FREE SERVICE!**



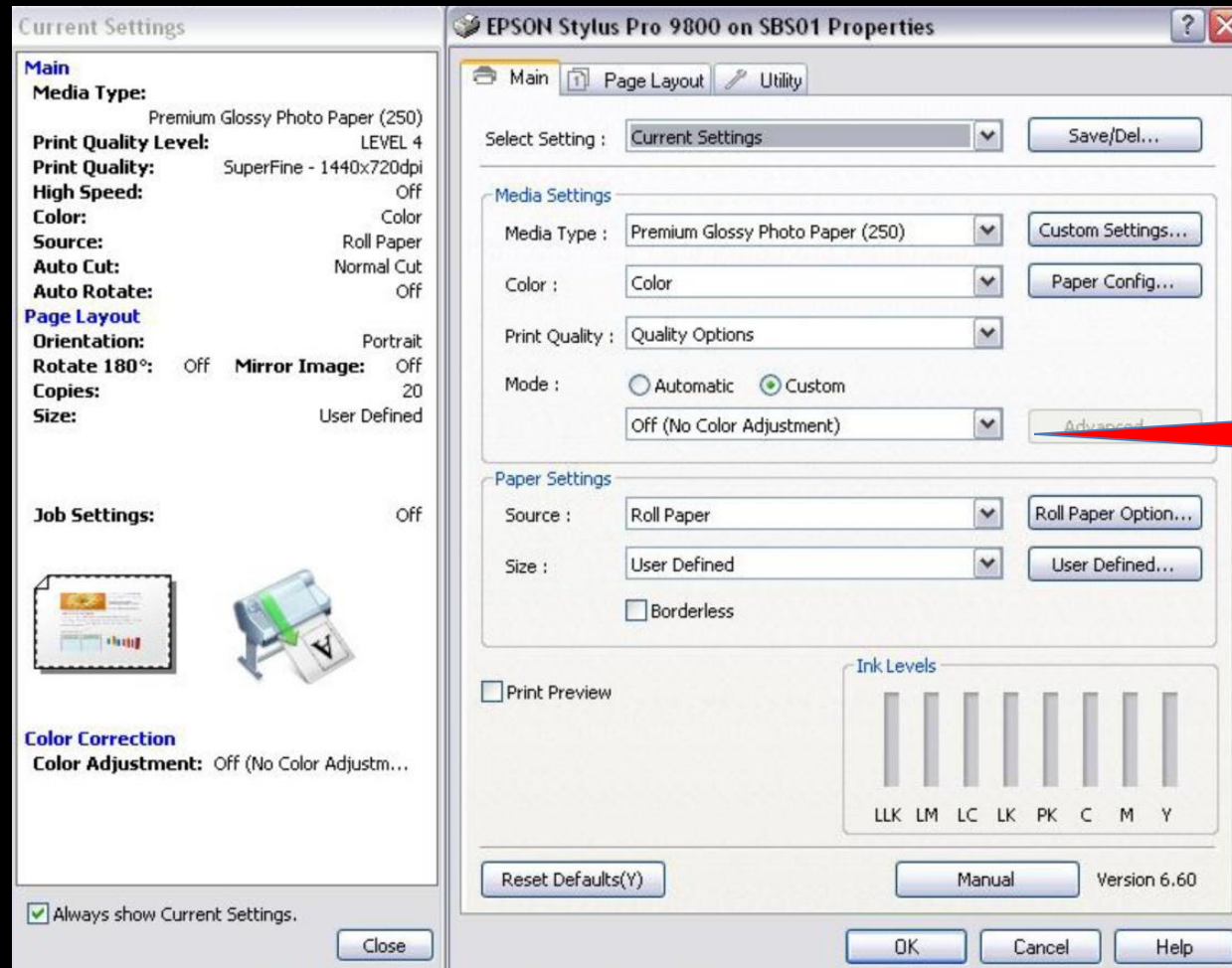
How do I use the Adobe Color Print Utility?



Select Media Type

| PERMAJET PAPER TYPE (alphabetical) | EPSON PRINTERS | | F |
|--|-----------------------------|--------------------------------|-----------|
| | Models using upto 6 inks | Models using 7 inks or more | |
| Alpha Natural Rag 310 | Epson Archival Matte | Velvet Fine Art Paper | Othe |
| Artist Watercolour 250 | Epson Archival Matte | Velvet Fine Art Paper | Othe |
| Digital Transfer Film 165µ | Epson Premium Glossy | Epson Premium Gloss | Photo Pap |
| Double-Sided Matt 250 | Epson Archival Matte | Epson Archival Matte | Mat |
| Double-Sided Oyster 285 | Epson Premium Semi-Gloss | Epson Premium Semi-Gloss | Photo Pa |
| Double-Sided Portfolio 230 | Epson Archival Matte | Velvet Fine Art Paper | Othe |
| FB Distinction 320 | Epson Premium Glossy | Epson Premium Gloss | Photo Pap |
| FB Gold Silk 315 | Epson Premium Semi-Gloss | Epson Premium Semi-Gloss | Photo Pa |
| FB Matt 285 | Epson Archival Matte | Velvet Fine Art Paper | Othe |
| FB Royal Gloss 310 | Epson Premium Glossy | Epson Premium Glossy | Photo Pap |
| FB Satin 310 | Epson Premium Semi-Gloss | Epson Premium Semi-Gloss | Photo Pa |
| Gallery Etching 310 | Epson Archival Matte | Velvet Fine Art Paper | Othe |

Epson Printers... Colour management "Off"



The screenshot shows the 'EPSON Stylus Pro 9800 on SBS01 Properties' dialog box. The 'Main' tab is selected, and the 'Color' dropdown is set to 'Color'. The 'Print Quality' is set to 'Quality Options', and the 'Mode' is set to 'Custom'. The 'Color Management' dropdown is set to 'Off (No Color Adjustment)'. A red arrow points to this dropdown menu. The 'Paper Settings' section shows 'Source' as 'Roll Paper' and 'Size' as 'User Defined'. The 'Ink Levels' section shows bars for LLK, LM, LC, LK, PK, C, M, and Y. The 'Print Preview' checkbox is unchecked. The 'Always show Current Settings' checkbox is checked. The 'Close' button is visible at the bottom left of the dialog box.

Current Settings

Main

Media Type: Premium Glossy Photo Paper (250)

Print Quality Level: LEVEL 4

Print Quality: SuperFine - 1440x720dpi

High Speed: Off

Color: Color

Source: Roll Paper

Auto Cut: Normal Cut

Auto Rotate: Off

Page Layout

Orientation: Portrait

Rotate 180°: Off **Mirror Image:** Off

Copies: 20

Size: User Defined

Job Settings: Off

Color Correction

Color Adjustment: Off (No Color Adjustm...)

Always show Current Settings.

Close

EPSON Stylus Pro 9800 on SBS01 Properties

Main Page Layout Utility

Select Setting: Current Settings Save/Del...

Media Settings

Media Type: Premium Glossy Photo Paper (250) Custom Settings...

Color: Color Paper Config...

Print Quality: Quality Options

Mode: Automatic Custom

Off (No Color Adjustment) Advanced

Paper Settings

Source: Roll Paper Roll Paper Option...

Size: User Defined User Defined...

Borderless

Print Preview

Ink Levels

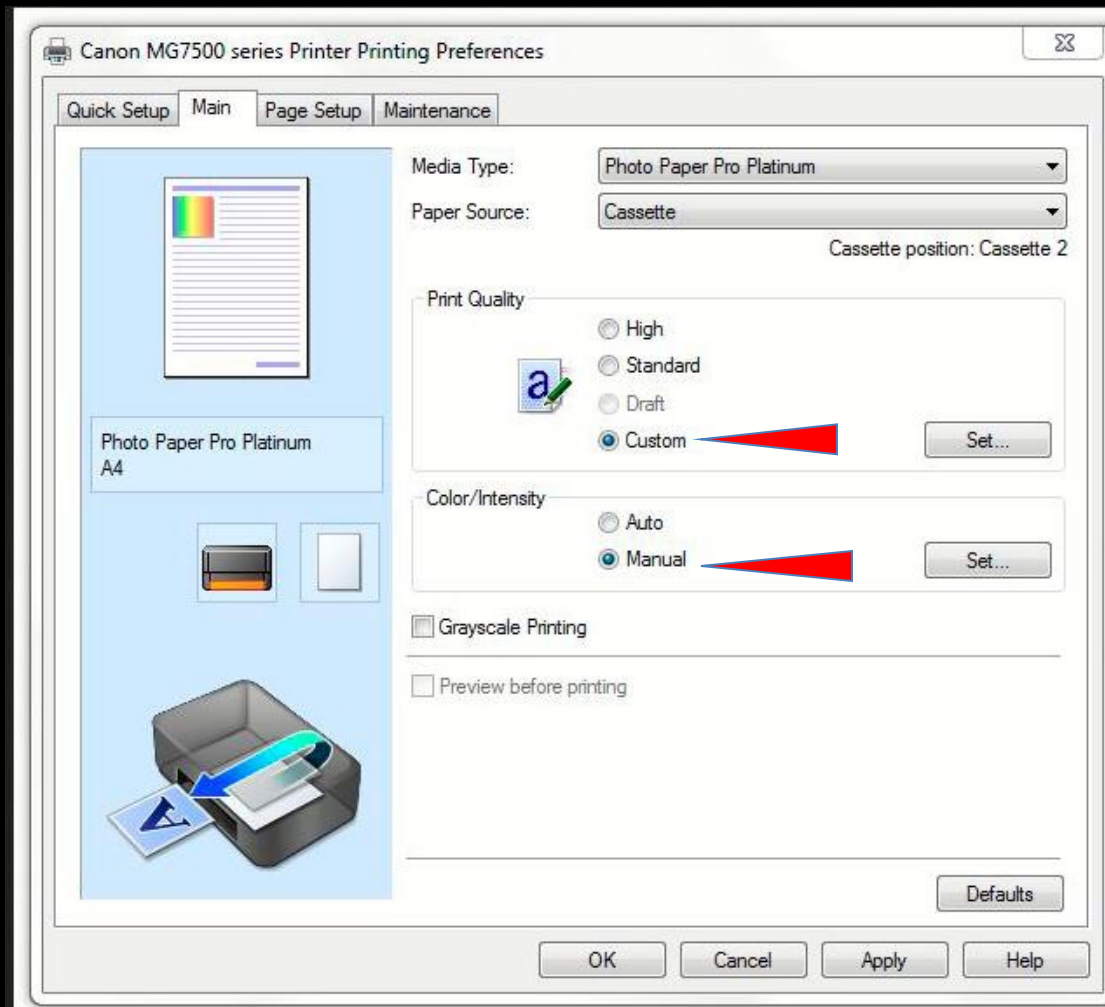
LLK LM LC LK PK C M Y

Reset Defaults(Y) Manual Version 6.60

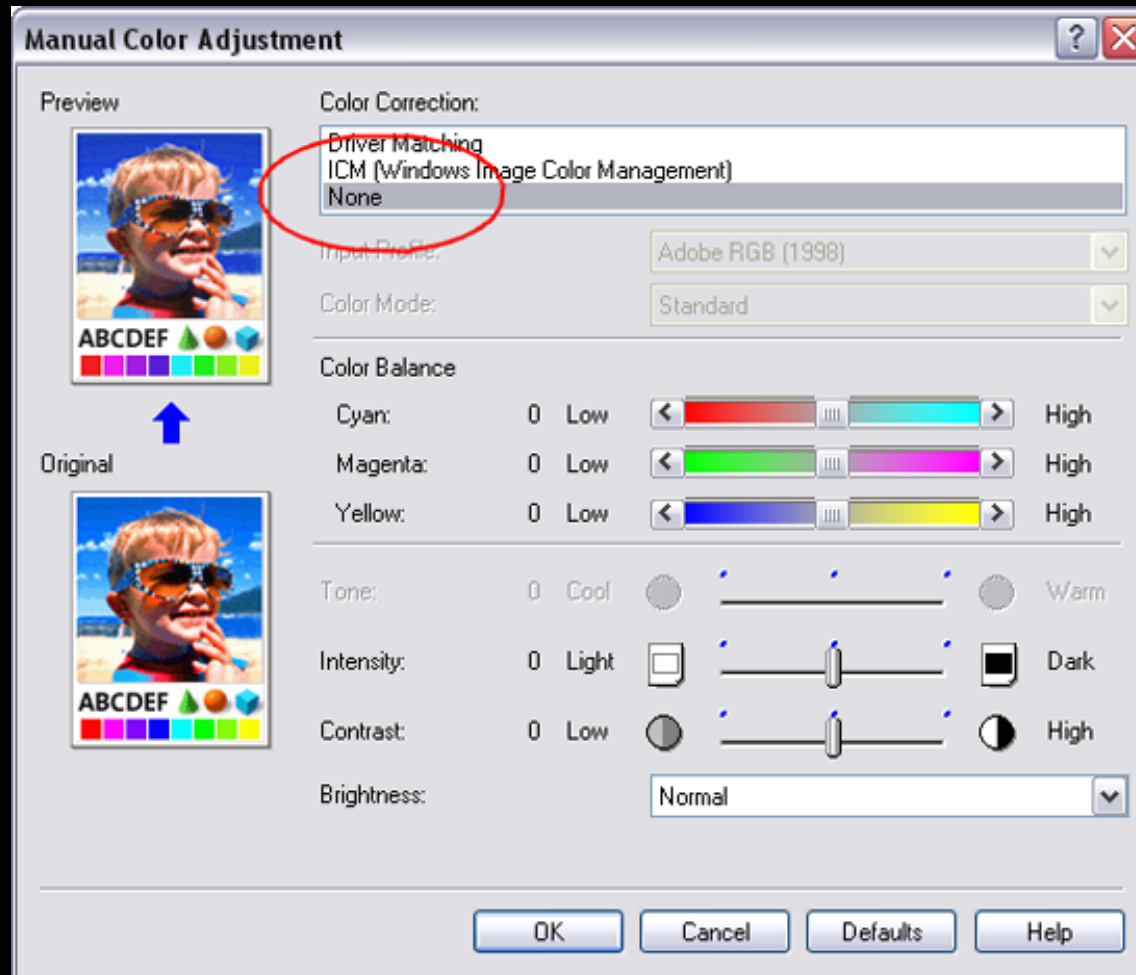
OK Cancel Help

Canon Printers...

Colour management "Off"



Canon Printers... Colour management "Off"



YouTube Videos to help...

Adobe Color Print Utility

& Printing a Target Patch

WINDOWS:-

<https://youtu.be/21KmYKA2eGE>

MAC – SIERRA:-

https://youtu.be/xAT_sC1n77U

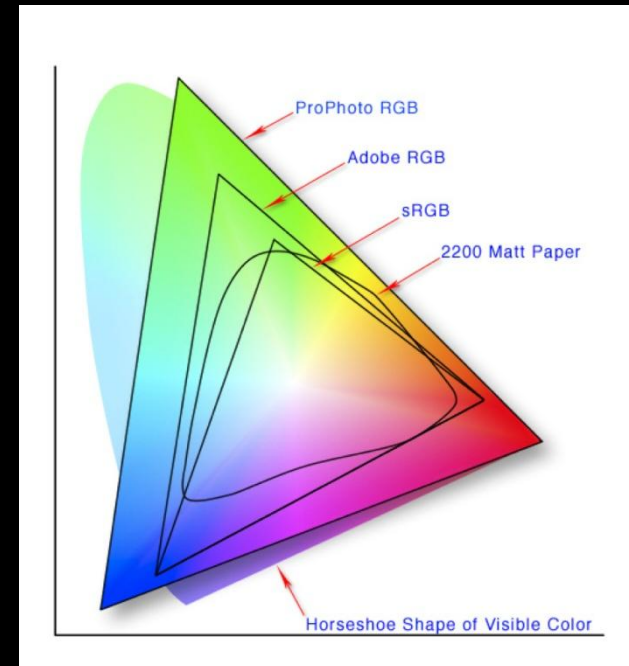


Set up your software correctly...

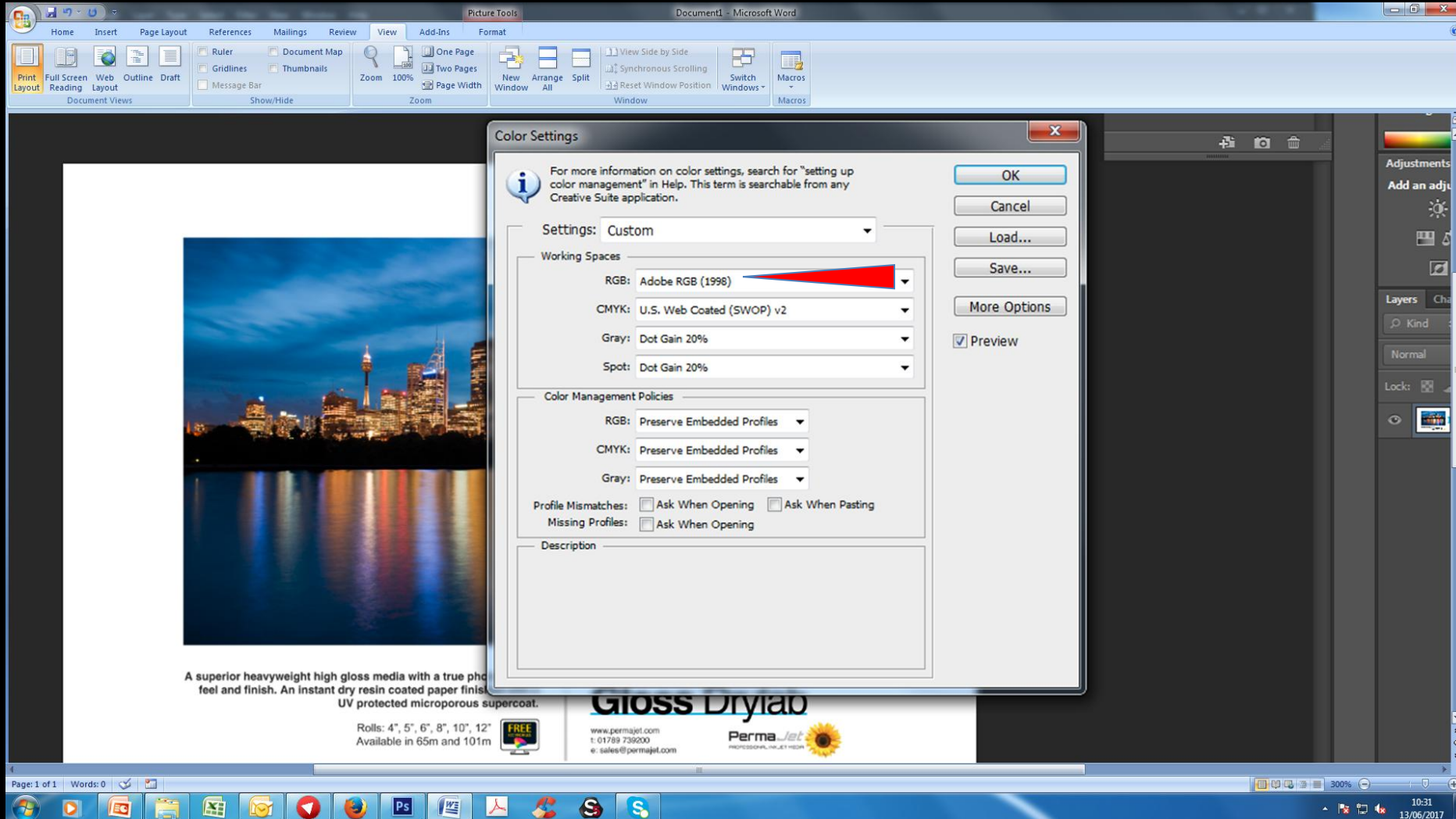
Before installing the new profiles, let's check your 'Photoshop' default settings first.

We recommend the following:-

- ☀ Adobe RGB (1998) as the printing workspace
- ☀ Perceptual Intent for the Rendering Intent
- ☀ Black Point Compensation should be ticked (retains the blackest point from the source file)



Setting the workspace...



Document1 - Microsoft Word

Home Insert Page Layout References Mailings Review View Add-Ins Format

Print Layout Full Screen Reading Web Layout Outline Draft Document Views Show/Hide

Zoom 100%

New Window Arrange All Split View Side by Side Synchronous Scrolling Reset Window Position Switch Windows Macros

Color Settings

For more information on color settings, search for "setting up color management" in Help. This term is searchable from any Creative Suite application.

Settings: Custom

Working Spaces

RGB: Adobe RGB (1998)

CMYK: U.S. Web Coated (SWOP) v2

Gray: Dot Gain 20%

Spot: Dot Gain 20%

Color Management Policies

RGB: Preserve Embedded Profiles

CMYK: Preserve Embedded Profiles

Gray: Preserve Embedded Profiles

Profile Mismatches: Ask When Opening Ask When Pasting

Missing Profiles: Ask When Opening

Description

OK Cancel Load... Save... More Options Preview

A superior heavyweight high gloss media with a true photo feel and finish. An instant dry resin coated paper finish. UV protected microporous supercoat.

Gloss Drylab

Rolls: 4", 5", 6", 8", 10", 12"
Available in 65m and 101m

www.permajet.com
1-817-819-739000
e: sales@permajet.com

PermaJet
PROFESSIONAL INK-JET MEDIA

Page: 1 of 1 Words: 0 300% 10:31 13/06/2017

How to install your new ICC Profile...

To install an ICC Profile on a PC, it goes in:—

C:Windows/System32/Spool/Drivers/Color

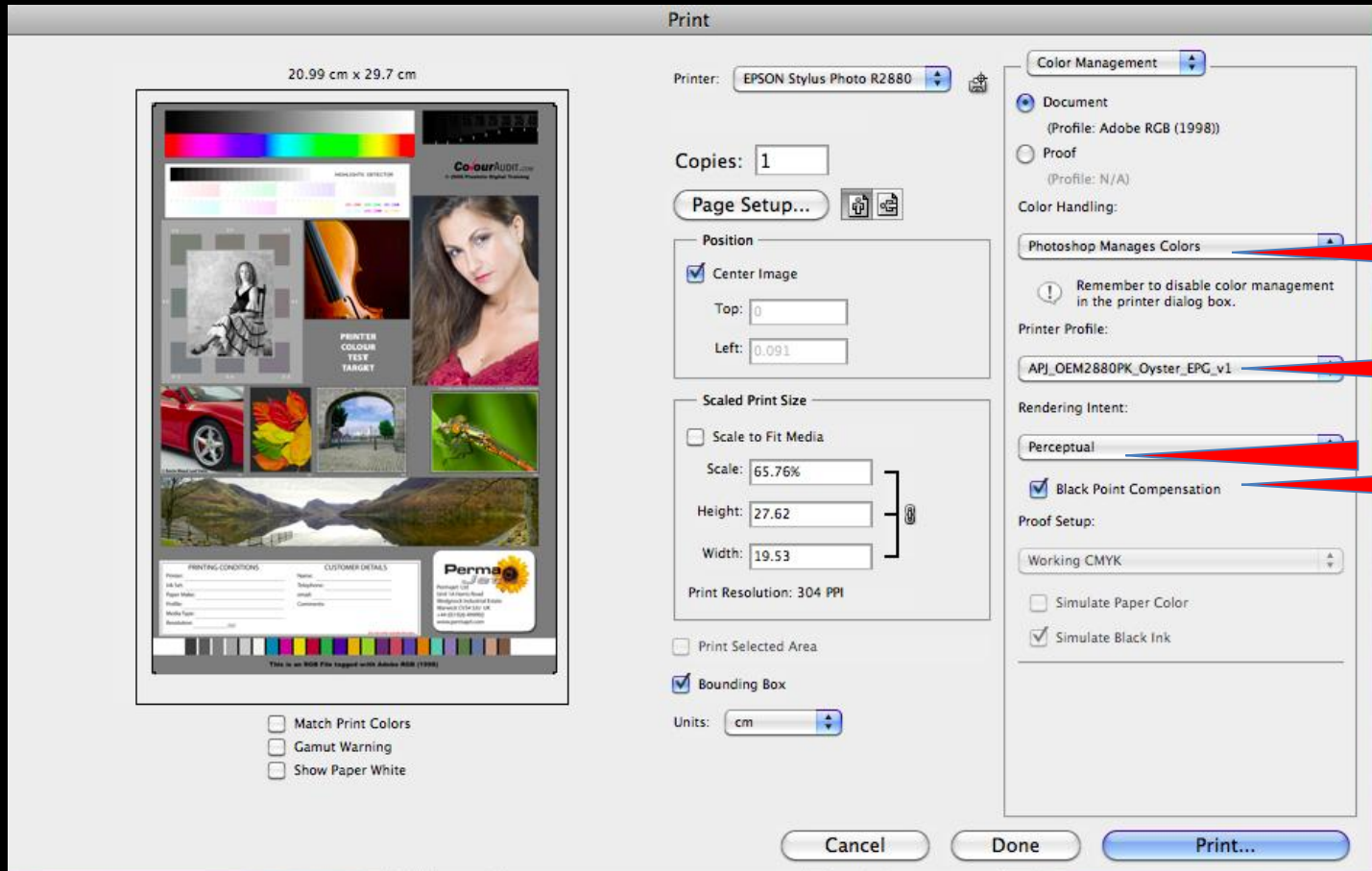
On a MAC, it goes in :—

(HD)/Library/ColorSync/Profiles

Profile name protocol

| Company | Surname | Ink Type | Printer Model | Black Ink Type | Media Type | Media Setting |
|---------|---------|------------|---------------|----------------|----------------|---------------|
| | | | | | | |
| APJ | HULLEY | OEM | 2880 | PK | OYSTER | EPG |
| | | | | | | |
| APJ | HULLEY | IMAGE LIFE | SCP600 | MK | PORTRAIT WHITE | WCRW |

How to use your new ICC Profile...



20.99 cm x 29.7 cm

Printer: EPSON Stylus Photo R2680

Copies: 1

Page Setup...

Position

Center Image

Top: 0

Left: 0.091

Scaled Print Size

Scale to Fit Media

Scale: 65.76%

Height: 27.62

Width: 19.53

Print Resolution: 304 PPI

Print Selected Area

Bounding Box

Units: cm

Color Management

Document
(Profile: Adobe RGB (1998))

Proof
(Profile: N/A)

Color Handling:

Photoshop Manages Colors

Remember to disable color management in the printer dialog box.

Printer Profile:

API_OEM2680PK_Oyster_EPG_v1

Rendering Intent:

Perceptual

Black Point Compensation

Proof Setup:

Working CMYK

Simulate Paper Color

Simulate Black Ink

Match Print Colors

Gamut Warning

Show Paper White

Cancel Done Print...



So, now the prints are colour correct...

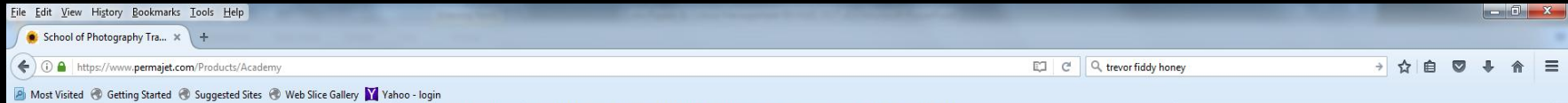


REMEMBER:-



- Light sources can distort your images
- Don't judge a print alongside the monitor – it will never match
- Allow your eyes to adjust to the viewing light conditions
- Consider purchasing a Daylight Print Viewing Lamp

PermaJet Academy



News and Events

from 10.30 am - 4.30 pm. A full buffet lunch and regular beverages are included as standard.
(all dietary requirements can be catered for - please mention special requirements when booking).

Both online and telephone bookings are possible and the full Academy prospectus is available directly from the Academy Administrator, Louise Hill on 01789 739207 or e-mail her directly at louiseh@permajet.com.








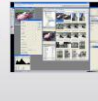

Our payments are processed by **sage pay**

These card types are all accepted



...Or if you prefer, subject to status, we can set up a credit account for you.

CLICK ANY OF THE BLOCKS BELOW TO SEE ALL DATES AND FURTHER COURSE CONTENT:

| | | |
|---|---|--|
| <p>Digital Printing Workshops - Scotland</p> <p>DIGITAL PRINTING WORKSHOP - Scotland and Borders Location: Various venues throughout...</p>  <p>More info</p> | <p>Train to Print</p> <p>A PermaJet Print Academy favourite... "FROM TRAIN TO PRINT" - A super weekend...</p>  <p>More info</p> | <p>The Ragged Victorians</p> <p>A PermaJet Print Academy training weekend for 2017... "PHOTOGRAPHY AND DIGITAL PRINTING..."</p>  <p>More info</p> |
| <p>Digital Printing Workshops - Lower Stondon</p> <p>DIGITAL PRINTING WORKSHOP - NEW VENUE Location: Mount Pleasant Golf Club, Lower Stondon...</p>  <p>NEW VENUE</p> <p>More info</p> | <p>Digital Printing Workshops - Stratford</p> <p>DIGITAL PRINTING WORKSHOP - Stratford-upon-Avon Location: Stratford-upon-Avon Tutors: Leigh...</p>  <p>More info</p> | <p>Monochrome Printing</p> <p>PRINTING MONOCHROME WITH CONFIDENCE - create stunning monochrome images the best...</p>  <p>More info</p> |
| <p>Photoshop - My Way</p> <p>PHOTOSHOP - MY WAY - a rare chance to see a workshop with PermaJet's most travelled club...</p>  <p>'My Way' with Irene Frey</p> <p>More info</p> | <p>Photoshop for Photographers</p> <p>PHOTOSHOP FOR PHOTOGRAPHER - Level 1 to 4 Location: Stratford-Upon-Avon Tutor: CLIVE HAYNES...</p>  <p>More info</p> | <p>Lightroom Skills Workshops</p> <p>DEVELOP YOUR SKILLS IN LIGHTROOM - Level 1 to 4 Location: Stratford-Upon-Avon Tutor: MARTIN...</p>  <p>More info</p> |

| | | | |
|---|--|---|--|
| <p>Information</p> <ul style="list-style-type: none"> • Delivery & Shipping • Privacy Policy & Cookies • Terms & Conditions • NEW - Glossary | <p>Customer Service</p> <ul style="list-style-type: none"> • My Account • Contact Us • Returns | <p>Networks</p> <ul style="list-style-type: none"> • Facebook • Twitter • YouTube | <p>Extras</p> <ul style="list-style-type: none"> • Product Finder • Testimonials • Newsletter Signup |
|---|--|---|--|

© The Imaging Warehouse, 2017





Technical Support

www.permajetphotographyblog.com

We have a team of dedicated technical and photographic staff based in Stratford-upon-Avon who have been in the industry for many years and are able to help you achieve better images.

+44 1789 739200 or technical@permajet.com



Get printing! Now you can create better prints!

**Thank you for your time today.
I hope you have learned something about
our company and
what we can do to help you with your
printing requirements.**