



# Vignettes 252

January 9th, 2025

## Contents

|  |   |
|--|---|
| Club News .....                              | 2 |
| Programme Secretary's Review .....           | 2 |
| The Annual Comps - uploading to Pixoroo..... | 5 |
| Photo Tours.....                             | 5 |
| External Exhibitions and Competitions .....  | 6 |
| 2024-25 Competitions and information .....   | 7 |
| Quote of the week .....                      | 8 |

## Club News

Hi everyone. I hope you are all well and survived a combination of festive food, drink and the stormy weather (I was going to say 'and wind' but it might have been misconstrued!). We had a good start to the new year with an excellent presentation by Roger Hance FRPS on People, Portraits and Photojournalism. Here's Dave with his summary of the presentation and a reminder about next week's meet up:

## Programme Secretary's Review

### Last Week/Next Week

*Hi everyone. Last Monday we had a great turnout (around 37 of us I think) for our second Zoom presentation of the Christmas/New Year period. Roger Hance FRPS (x 4!), presented a super talk on People, Portraits and Photojournalism.*

*There were some interesting tips, for instance using a wide-angle lens to get close up for those candid people shots, plus a whole list of places to consider visiting for this genre – Blists Hill, Black Country Museum, Beamish Museum, Tough Mudder, Brick Lane, Tate Modern, Speakers' Corner, protest rallies, music venues, 1940's Reenactment Events, even night clubs, Slimelight in London being a notable Goth Club with very accommodating 'inmates' as his photos reveal! Roger also covered studio ideas too.*

*A common message was don't be nervous about approaching people (they often want to be photographed) and don't be afraid to move and pose the subject and work the location to get the best possible composition and lighting for the shot. One of his main tips was to get yourself well prepared as you don't have long to grab that images particularly as you are working with people who don't know you. You generally have to work fast.*

*There were some super images too, I especially liked the Silver Efex mono conversions which turned fairly ordinary colour images into something special.*

*Roger also gave us some discount codes:*

*PermaJet – 20% discount plus free postage – ROGERHANCE20*

*OM Systems – 10% discount – RHVIP10*

### Next week - start time 7.30

*Next week it's competition time again, Martin Fry judging Competition C (Set subject - Golden/Blue Hour). **We will be starting at 7:30 pm this time and not our earlier 7.00 time**, and as there will be a lot of images to go through we intend to make a prompt start. Note also that it's also submission date for Competition D (Set subject - Still Life).*

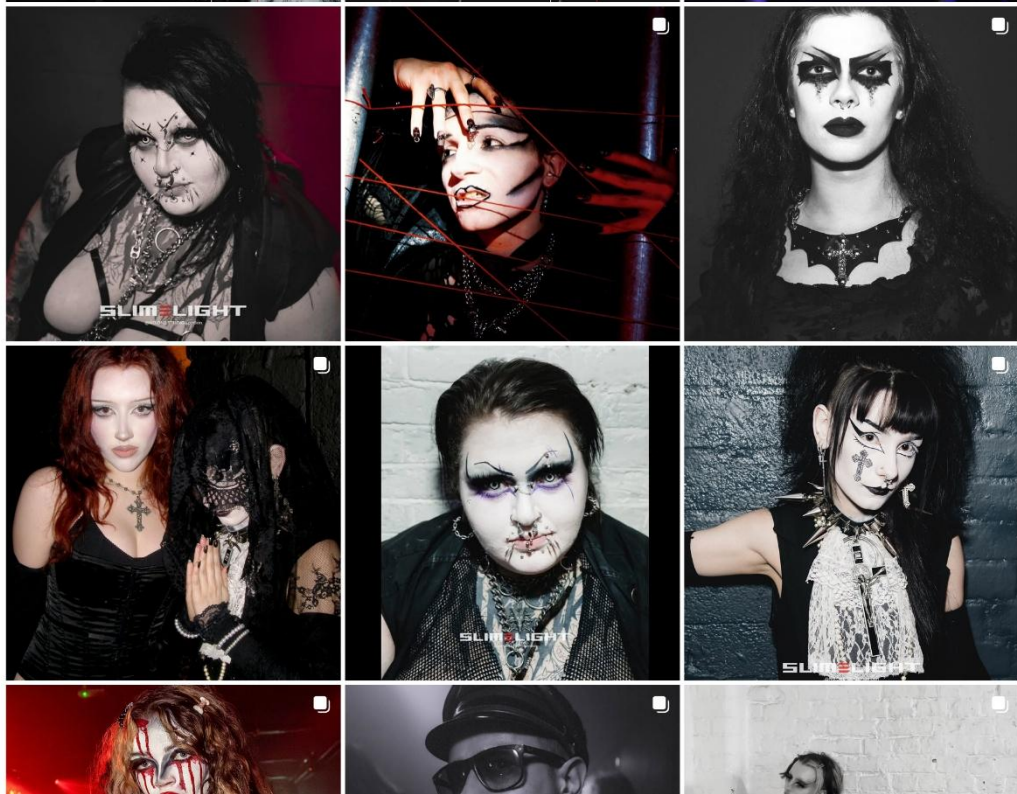
Thanks Dave. It did strike me that Roger has that robust, direct, approach to his style of photography which many of us shrinking violets can only aspire to particularly given that his subjects are total strangers. Whether Jean's suggestion that we should take a trip to the 'Slimelight club' to hone our skills garners interest is anyone's guess, but in

the meantime here's an extract from its Instagram page to get you in the mood (if you know what I mean):

The screenshot shows the Instagram profile for 'slimlightofficial'. At the top, the status bar indicates 'Mail 18:52 Wed 8 Jan' and 'instagram.com' with a 92% battery level. The Instagram logo is in the top left, and 'Log in' and 'Sign up' buttons are in the top right. The profile header includes the name 'slimlightofficial', 'Follow' and 'Message' buttons, and statistics: '592 posts', '17.1K followers', and '440 following'. The bio reads: 'Slimlight London The world's longest-running dark scene club at Electrowerkz since October 1987. next : SAT 11.01.25 🖤 linktr.ee/slimlight'. Below the bio is a row of seven circular icons: 'DRESS CODE', '2024 DATES', 'MAY 24', 'APRIL 24', 'MARCH 24', 'FEB 24', and 'JAN 24'. The main content area is set to 'POSTS' and shows three posts. The first post features Ricardo Castro, the second features Mara Morten, and the third features a woman in a dark outfit. Each post includes the 'SLIMLIGHT' logo and event details: '7 TORRENS ST EC1V 1HQ LONDON 11 JAN 25'.

Instagram

Log in Sign up



Summer meet-up Programme option Jean? What could go wrong!!

Paul's info re the Gloucester Cathedral exhibition - He needs your help

As Paul mentioned on Monday night, he's now putting together a couple of Image boards for the upcoming photography exhibition in Gloucester Cathedral in which 8 Cotswold Photography Clubs are invited to participate. Here's Paul:

### **Gloucester Cathedral Photo Exhibition**

*Hi everyone. As I mentioned on Monday night, Cirencester Camera Club have been invited, along with 8 other camera clubs across the Cotswolds, to display a range of their images depicting their local area, ours being the Cirencester area. We have been allocated two exhibition board's each 1.6m sq. If you have any local images of Cirencester and its surrounding that you would like to be included in the exhibition, please can you let me know and then submit them through Pixoroo at the following link:*

<https://pixoroo.com/localcompetitions/cirencester-camera-club/2024-2025/exhibition/gloucester-cathedral-exhibition>

*I have allowed up to 6 entries per person and **closing date 20th Jan.** The exhibition is mid-Feb so timescales are now a little tight for me to put everything together.*

*The photographs do not need to be taken within the last 2-3 years, they can be older but need to portray Cirencester and the immediate surrounding area. If we have anything historic they are particularly interested. In due course each image will need a short bio but this can follow after we've chosen a good representative cross section of images. In terms of selection, I am keen to include as many authors as possible, with a wide range of topics including leftfield ones like the Mop Fair but will need to make sure they balance together.*

*Please can you all have a look and either upload by early next week or let me know at camera club (or via whats app / email) if you have an image or images you would like to submit. My only wish is don't leave it too late.*

*Thanks in advance*

*Paul*

### **The Annual Comps - uploading to Pixoroo**

Fin has been in touch just to say that images to be entered in the Annual Comps listed below can now be uploaded on Pixoroo. The deadline for Uploading/Submitting images for the Annual Comps is 24th March. I'm sure you are well organised to take advantage of this excellent software by uploading nice and early - yeah right!

### **Photo Tours**

Dave Cahill has been in touch

Hi Martyn. I've had another of these Iberian Photo Tours emails, maybe others have had it too. We put something in Vignettes last time so just in case anyone is interested here's the info:

Cheers

Dave

*From "Iberian Photo Tours" <[iberianphoto.tours@gmail.com](mailto:iberianphoto.tours@gmail.com)>*

*To*

*Date 06/01/2025 15:48:29*

*Subject New Year Photography Trips - Booking now!*

*Dear Club Secretary / Club Official / Photography enthusiast,*

*Wishing you a very happy new year! I wonder what you will be photographing this year? Any new or interesting wildlife you have never seen before? Iberian Photographic Tours are expanding our range of photographic trips and working with national Spanish reserves and parks to identify stunning wild animals to photograph and accommodation for you too. Here are some of our tours we are currently taking bookings for:*

- *8-11 April 2025 **Lammergeiers and Golden Eagles** two day, 3 nights photography tour. Day 2 photographing the Lammergeiers, Black Vultures and Griffin Vultures. Day 3 photographing the Golden Eagles*

- *March - Fully booked*
- *8-11 July 2025 Iberian Lynx Tour, 2 Days, 3 nights photographing the endangered Iberian Lynx in the Sierra Morena National Park.*

*All tours are guided by a professional photographer, and we collaborate with the reserve owners to bring you a stunning variety of wildlife photographic opportunities, throughout the peninsula. If you would like to know more about these tours, please take a look at our [website](#) or contact me on [email](#) or via the social media sites on [Facebook](#) or [Instagram](#). Or do give me a call on: +44 7522 562 423.*

*Dale Sutton*

*Iberian Photographic Tours*

*[Iberianphoto.tours](http://Iberianphoto.tours)*

*+44 7522 562 423*

## **External Exhibitions and Competitions**

British Journal of Photography reveals the 100 winners of Portrait of Britain Vol.7

Hot on the heels of Roger Hance's presentation, it's opportune to report this competition which we highlighted in V246. The winners of British Journal of Photography, Portrait of Britain Vol.7 have been announced. The Portrait of Britain competition, organized by The British Journal of Photography, is one of the most prestigious contests for portrait photography in the world, with the competition notoriously springboarding many a photographer's career. Now in its seventh edition, the latest winners have been announced, showcasing the top contemporary portrait photographers and reflecting the diversity of modern Britain.

Now in its eighth year, the Portrait of Britain Awards continues to celebrate the diversity, resilience, and spirit of the nation by documenting the unique perspectives of individuals and communities. From a shortlist of 200, 100 winning images have been selected, featuring everything from celebrity portraits, including icons like Sir David Attenborough, to a touching kiss between two elderly spouses celebrating their wedding anniversary – the winning selection is a must-see for all. Here's a link:

<https://www.1854.photography/awards/portrait-of-britain/portrait-of-britain-vol-7-shortlist-and-winners/>

ViewSonic's Color Pro Awards

Now in its fifth year, ViewSonic's Color Pro Awards continues to recognize excellence in photography, videography and digital art. The theme of the 2024 awards was 'Momentum' and the organizers challenged photographers and creators to explore the meaning of the word "beyond physical motion, delving into emotional and symbolic dimensions". Winner of the Photography category of 2024's ViewSonic ColorPro Awards, captured this incredible underwater photograph of a diver swimming towards a shoal of sardines in Moalboal, Philippines. Check out the link:

<https://www.viewsonic.com/uk/colorpro/event/colorproawards2024/gallery>

Is your New Year's resolution is to learn the exposure triangle and switch to manual mode? Read on

Here's a great article all about learning the exposure triangle. It's an easy read a good one to keep you on the straight and narrow. Check it out:

<https://www.digitalcameraworld.com/photography/photo-technique/im-a-photography-expert-heres-how-i-learned-the-exposure-triangle-and-how-i-use-it-to-shoot-in-manual-mode>

BBC pictures

As usual some great images from across the globe from the BBC's website:

<https://www.bbc.co.uk/news/articles/cvg72pdvw1ro>  
<https://www.bbc.co.uk/weather/articles/clyjvmqzrr9o>  
<https://www.bbc.co.uk/news/articles/czxd5knwzpwo>  
<https://www.bbc.co.uk/news/articles/c23vx4kvzj0o>  
<https://www.bbc.co.uk/news/articles/cr4rdg31e6go>  
<https://www.bbc.co.uk/news/articles/cdx98lxdzkqo>  
<https://www.bbc.co.uk/news/articles/c0ewjj1q3deo>  
<https://www.bbc.co.uk/news/articles/c878vegg755o>  
<https://www.bbc.co.uk/news/articles/cy0n7dirqzyo>

## 2024-25 Competitions and information

| Cirencester Camera Club General Competition Schedule 2024/2025 |                               |                 |                          |
|--|-------------------------------|-----------------|--------------------------|
|  | Competition                   | Submission date | Judging night            |
| A  | Journey + Open                | 30/09/24        | 28/10/24                 |
| B  | UK Flora, Fauna, Fungi + Open | 28/10/24        | 02/12/24                 |
| C  | Golden/Blue Hour + Open       | 02/12/24        | 13/01/25                 |
| D  | Still Life + Open             | 13/01/25        | 17/02/25                 |
| E  | Closed + Open                 | 17/02/25        | 24/03/25                 |
| Annual   | 2024-25 Annual competitions   | 24/03/25        | 14/04/25 and<br>28/04/25 |

### Definitions of Set Subjects

**JOURNEY:** A journey photograph is an image captured during the course of a journey or expedition, typically depicting scenes, landscapes, people, or moments encountered along the way. These photographs often aim to convey the essence of the journey, capturing the spirit of exploration, discovery, and adventure.

**UK Flora, Fauna, Fungi:** A flora, fauna, fungi photograph is an image that showcases plant life (flora), animal life (fauna), or fungi found in a particular ecosystem or habitat. These photographs aim to highlight the diversity, beauty, and intricacies of the natural world. They can range from close-up shots of individual species to wide-angle landscapes that capture entire ecosystems.

**Golden/Blue Hour:** During the golden hour, the sun is low in the sky, casting long shadows and creating a warm, diffused light that can enhance the colours and textures in a scene, often producing a soft, flattering glow. In contrast, the blue hour occurs just before sunrise or after sunset when the sky takes on a deep blue hue, creating a serene and tranquil atmosphere.

**Still Life:** A still life photograph is an image that portrays inanimate objects, typically arranged by the photographer to create a visually compelling composition. It can range from simple, minimalist compositions to more elaborate and stylized scenes, depending on the creative vision of the photographer.

**Closed:** A photograph with the title "closed" could depict a variety of subjects or scenes, but the title suggests a theme of closure, restriction, or inaccessibility.

#### **Summer Cup** (judged by members)

This is an informal competition which takes place during the 'off season' between June and September. Members can submit an image on one or all of the three subjects, which must be taken between end of May and beginning of September. These will then be judged by the other members at the start of the season. [Exact dates and subjects will be confirmed each year at the AGM]

#### **Ted Parrott Memorial Trophy** (judged by members)

This Trophy is in memory of a long standing and valued member of the Club, Ted Parrott who passed away in 2019. Images must be of 'Sporting Action', and be submitted by the start of the season. This image must have been taken between the start of the current season and the start of the following season. [Exact dates will be confirmed each year at the AGM]

For all Competitions, please upload images via Pixoroo link below: -

[pixoroo.com/public/account/login](https://pixoroo.com/public/account/login)

#### **Quote of the week**

*I have often thought that if photography were difficult in the true sense of the term-meaning that the creation of a simple photograph would entail as much time and effort as the production of a good watercolour or etching-there would be a vast*



*improvement in total output. The sheer ease with which we can produce a superficial image often leads to creative disaster - Ansel Adams*

That's it for this week.

Cheers

Martyn ([thehoneys@btinternet.com](mailto:thehoneys@btinternet.com))

David ([david.wallis@btinternet.com](mailto:david.wallis@btinternet.com))

Dave ([dave.cahill975@btinternet.com](mailto:dave.cahill975@btinternet.com))

## DECEMBER TOPIC

### Unbalancing colour.



White balance is an essential aspect of photography, yet it can often seem counterintuitive. Here's a deeper look into how white balance settings work and how you can use them to your advantage:

1. **Understanding White Balance:** White balance (WB) adjusts the colours in your photos to make the image look more natural. It compensates for the colour temperature of the light source, which can vary from warm (yellow/red) to cool (blue). Different light sources have different colour temperatures measured in Kelvin (K).
2. **Preset White Balance Settings:**
  - **Auto White Balance (AWB):** The camera automatically detects and adjusts the white balance. This setting works well in many situations but may struggle with mixed lighting.
  - **Daylight/Sunny:** Used for clear, sunny days. Adds a slight warm tone to the image.
  - **Cloudy:** Adds warmth to counteract the coolness of cloudy light.
  - **Shade:** Adds even more warmth, as shaded areas are typically cooler.
  - **Tungsten/Incandescent:** Adds blue tones to counteract the yellow/orange light of tungsten bulbs.
  - **Fluorescent:** Adds magenta to counteract the green/blue light of fluorescent bulbs.
  - **Flash:** Adds warmth to balance the cool light of a flash.
3. **Counterintuitive Nature:**
  - **Candlelight:** Often has a warm, yellowish hue. The camera compensates by adding cool, blue tones to balance the warmth.

- **Fluorescent Light:** Has a cool, greenish-blue hue. The camera compensates by adding warm, pink tones to balance the coolness.
4. **Custom White Balance:**
- **Manual Adjustment:** You can manually set the white balance by specifying the colour temperature in Kelvin. Lower values (e.g., 2500K) add blue tones for warm lighting, while higher values (e.g., 7500K) add warm tones for cool lighting.
  - **Using a White or Gray Card:** You can set a custom white balance by photographing a neutral grey or white card under the lighting conditions you'll be shooting in. The camera uses this reference to adjust the colours correctly.
5. **Creative Uses:**
- **Artistic Effects:** You can intentionally set the wrong white balance for creative effects. For example, using a tungsten setting in daylight can give a cool, blue cast to your photos, creating a unique mood.
  - **Consistency in Mixed Lighting:** Custom white balance can help achieve consistent colours when dealing with mixed lighting sources, which can be particularly useful in controlled environments like studio photography.

By mastering white balance settings, you can ensure your photos have accurate colours or creatively manipulate the mood and feel of your images. Experimenting with different settings will help you understand how to use white balance to enhance your photography.

## Brief

### 1. Conduct Test Shots Across Settings:

- Choose a variety of subjects under different lighting conditions (e.g., daylight, tungsten, fluorescent, etc.).
- For each setup, capture a series of images using every white balance preset your camera offers (e.g., Auto, Daylight, Cloudy, Tungsten).
- Save the images in JPEG format to observe the direct effect of each setting.
- Compare the results to understand how each preset alters the colours under different lighting.

### 2. Experiment with Custom White Balance:

- Use different objects as your reference for custom white balance settings:
  - Set your camera to "Custom White Balance" mode.

- Photograph a neutral surface, such as a grey card or a white patch, as the reference point for the camera.
- Experiment with variations:
  - Use differently coloured "cards" (e.g., pale blue, beige, or slightly tinted surfaces).
  - Observe how these influence the final image, noting that a pale blue reference creates warmer tones in the image.

### **3. Shooting in RAW**

Although all the above can be done in post processing RAW images it can sometimes be necessary to have fixed colour temperature in an image.

- Take an in-camera multi- exposure image with both warm and cool colours